



C6TC

Full-Room Coverage, Motion-Tracking Master

A Full HD 1080p Wi-Fi pan-tilt camera provides full-room coverage.

Key Features

**Full
HD**

1080p



Pan and Tilt. Up to 340° horizontal and 90° vertical.



Supports smart motion tracking and recording



Supports MicroSD card slot, up to 128GB



Smart lens shutter for privacy protection



Two-way audio



True Day/Night camera with auto-switching. Infrared night vision up to 10 meters.



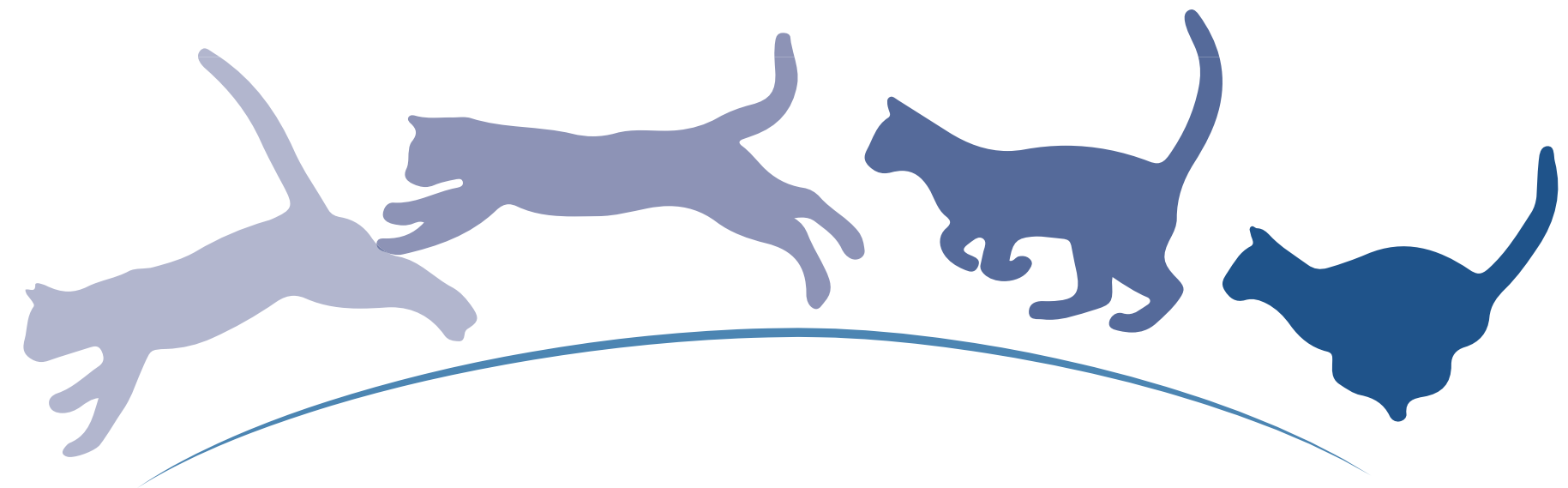
360° horizontal panorama

The C6TC includes an expansive field-of-view coverage with 340° horizontal, 80° vertical upward and 10° vertical downward rotations.



Smart tracking

Upon detection of movement, the C6TC automatically captures and tracks the motion while delivering alerts and video recordings in real time.



Privacy shutter

The thoughtfully-designed privacy shutter allows you to turn the lens off whenever you need privacy.



Night vision

The C6TC is equipped with two powerful infrared lights for night vision up to 10 meters (depending on environment).



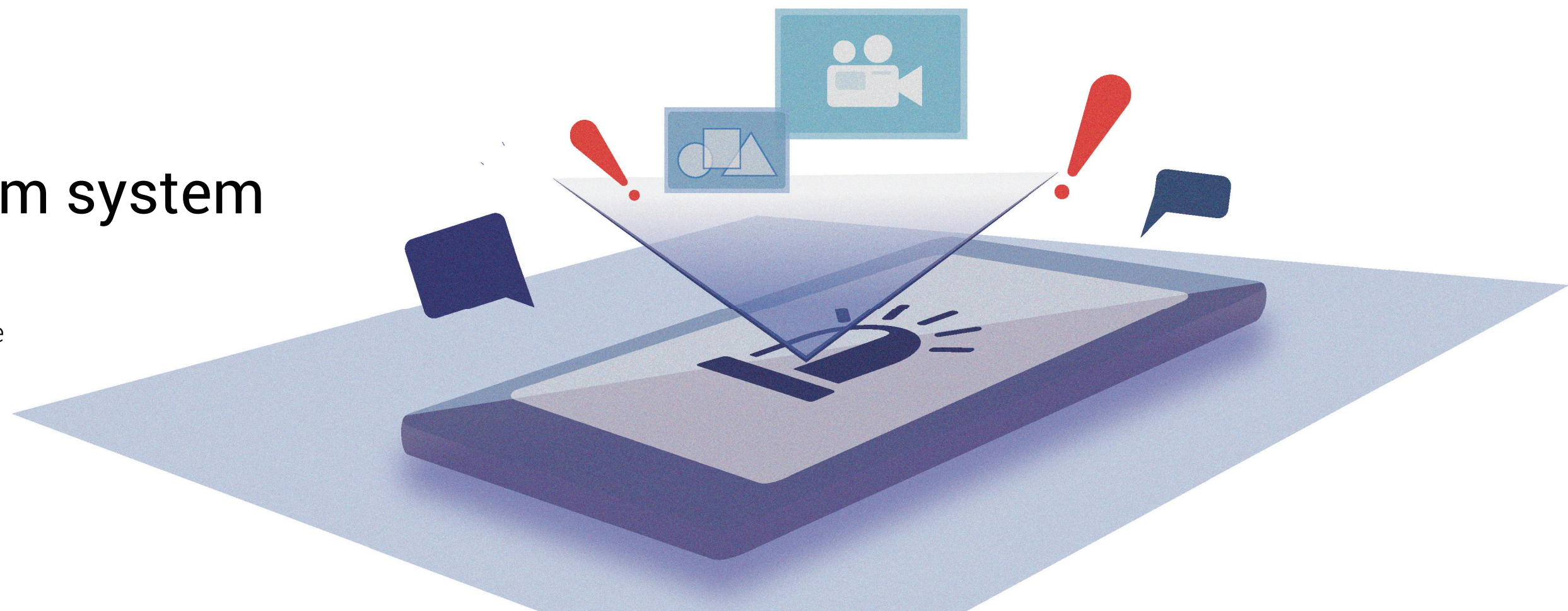
Two-way audio

The built-in microphone and HiFi quality speaker enable two-way talk via the camera and your phone or tablet.



Integrates with EZVIZ alarm system

The C6TC can be integrated into the EZVIZ alarm systems. Once an alarm is triggered, the camera will capture a picture and video footage and send them to the device owner.



Specifications Model CS-CV248-A0-32WFR

Camera

Image Sensor	2 megapixel 1/3" Progressive Scan CMOS
Shutter	Self-adaptive shutter
Lens	4mm@ F2.2, Diagonal angle: 95°
PT Angle	Pan: 340°, Tilt: 90°
Lens Mount	M12
Day & Night	IR-cut filter
DNR	3D DNR
WDR	Digital WDR

Compression

Video Compression	H.264
H.264 Type	Main Profile
Video Bit Rate	HD, Balanced and Smooth. Adaptive bit rate.

Image

Max. Resolution	1920×1080
Image Settings	Brightness, contrast, saturation, etc. (configurable via EZVIZ Studio)
BLC	Support

Network

Storage	Supports MicroSD card (max. 128GB)
Smart Alarm	Motion detection
Wi-Fi Pairing Protocol	SmartConfig (Wi-Fi One-Key Configuration)/AP pairing
Interface Protocol	EZVIZ Cloud proprietary protocol
General Features	Anti-Flicker, Dual-Stream, Heartbeat Messages, Mirror Image, Password Protection, Watermark
Minimum Network Requirements	2Mbps

Wireless Specifications (for Wi-Fi-supported devices)

Standard	IEEE802.11b, 802.11g, 802.11n
Frequency Range	2.4 GHz ~ 2.4835 GHz
Channel Bandwidth	Supports 20MHz
Security	64/128-bit WEP, WPA/WPA2, WPA-PSK/WPA2-PSK, WPS
Transmission Rate	11b: 11Mbps, 11g: 54Mbps, 11n: 135Mbps

General

Power Supply	DC 5V±10%
Power Consumption	8W Max
IR Range	MAX. 10 meters
Product Dimensions	100mm x 100mm x 90mm
Packaging Dimensions	126mm x 126mm x 155mm
Weight	220g

Package Contents:

- C6TC X 1
- Base X 1
- 3 Meters Power Cable X 1
- Drill Template X 1
- Screw Kit X 1
- Power Adapter X 1
- Quick Start Guide X 1

Requirements

- Operating Conditions: -10°C ~ 55°C, Humidity 95% or less (non-condensing)

Certificates

FCC/UL/IC/NOM/CE/RoHS/WEEE/REACH

Specifications are subject to change without notice. EZVIZ is a registered trademark of Hangzhou EZVIZ Network Co., Ltd.
Other brands and product names are trademarks or registered trademarks of their respective holders.

<https://www.ezvizlife.com/>