

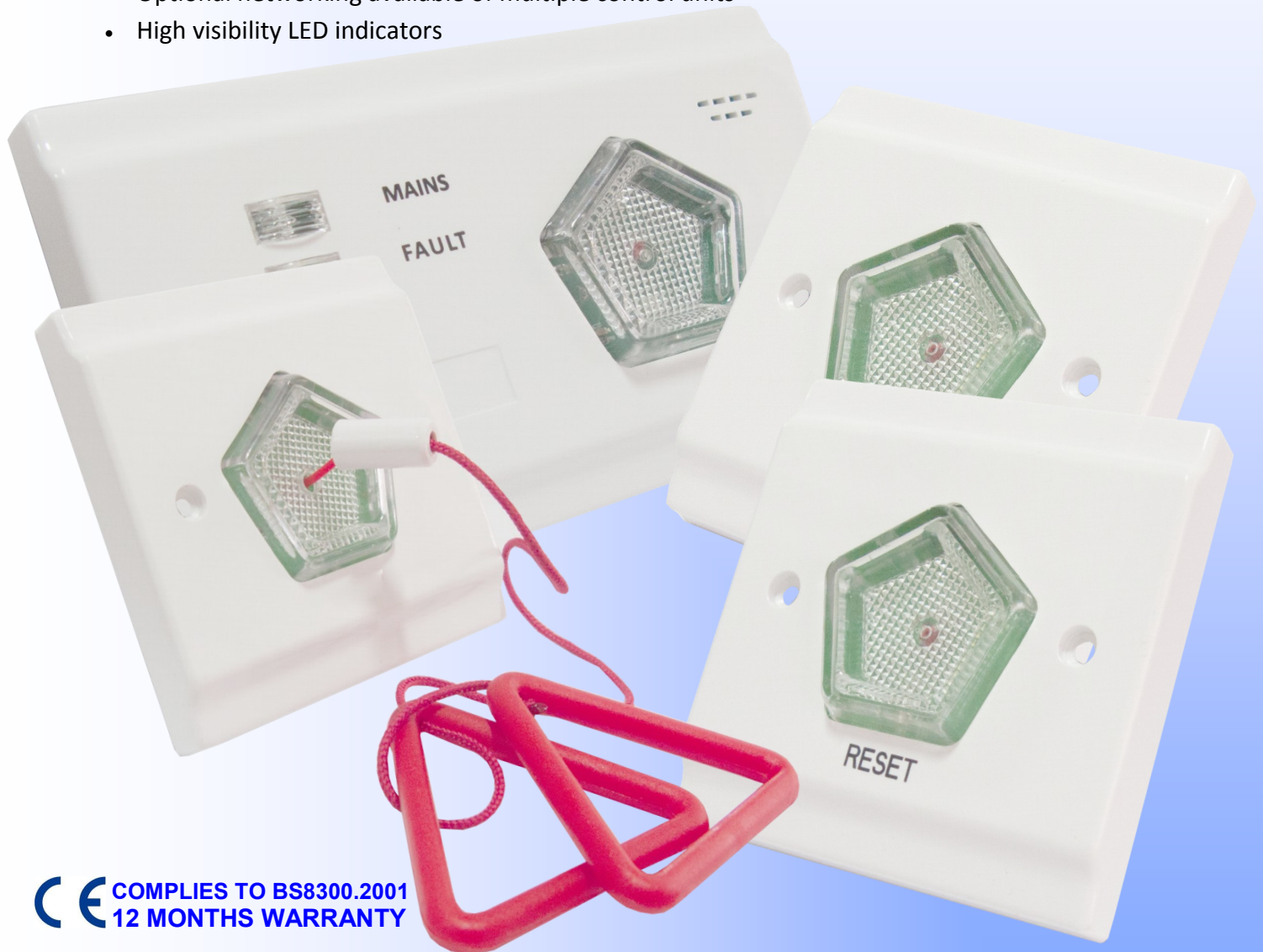
**RGL**

## CALL FOR ASSISTANCE SYSTEM (C4A-4)

**RGL**

### KEY FEATURES:

- Appealing design and simple to use
- Two wired system
- Integral power supply
- On-board NO/NC Relay (triggered on activation of Pull Cord)
- Integral Reset button
- Power on indicator for mains supply
- Optional networking available of multiple control units
- High visibility LED indicators

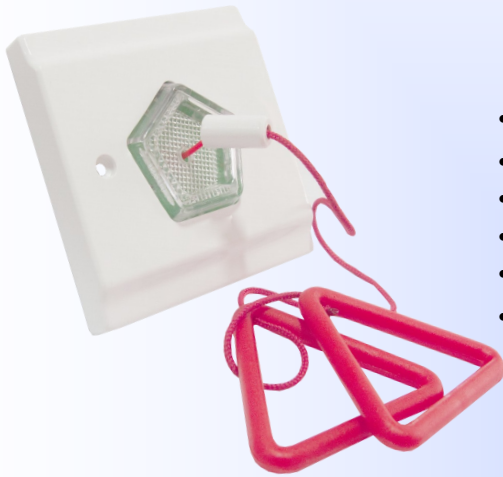
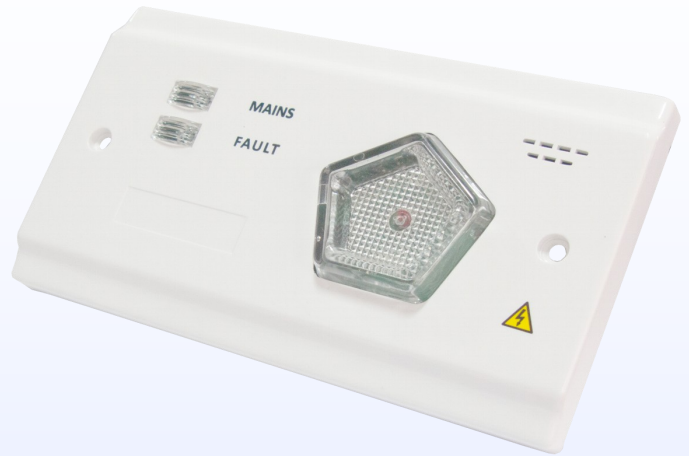
**NEW!****TWO WIRED SYSTEM**

**CE COMPLIES TO BS8300.2001  
12 MONTHS WARRANTY**

- High output audible sounder
- Reset unit with reassurance LED & sounder
- Flush mounted 'Pull for assistance' cord with reassurance LED
- Over Door indicator lamp with powerful sounder
- Battery back up includes
  - Standby Period—24 Hours
  - Alarm Period—45 Minutes

### Main Control Unit (C4A-MAIN):

- Integral power supply
- Two wired system
- On-board NO/NC Relay
- Integral Reset button
- Power on indicator for mains supply
- Selectable reset (3 Options)
- Optional network expansion
- Battery back up includes
  - Standby Period—24 Hours
  - Alarm Period—45 Minutes
- Dimensions: 145mm x 85mm

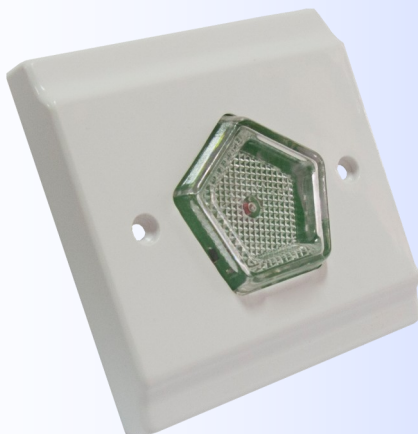


### Pull Cord (C4A-PC):

- Flush mounted 'Pull for assistance' cord with reassurance LED
- Red Pull Cord with 2 x Red Handles
- Pull Cord Length: 3 Meters
- Red Handles size: 50mm x 50mm x 50mm
- Plate Dimensions: 85mm x 85mm
- Flush Fitting requires 25mm Single Gang Box
  - Only compatible with RGL C4A-MAIN

### Reset Button (C4A-RES):

- Integral sounder and LED indication
- Dimensions: 85mm x 85mm
- Flush Fitting requires 25mm Single Gang Box
- Only compatible with RGL C4A-MAIN



### Over Door Indicator (C4A-IND):

- Powerful sounder and High Bright Red LED indication.
- Dimensions: 85mm x 85mm
- Flush Fitting requires 25mm Single Gang Box
- Only compatible with RGL C4A-MAIN

**NEW!**  
**TWO WIRED SYSTEM**

**RGL**

**CALL FOR ASSISTANCE SYSTEM  
(C4A-4)**

**RGL**